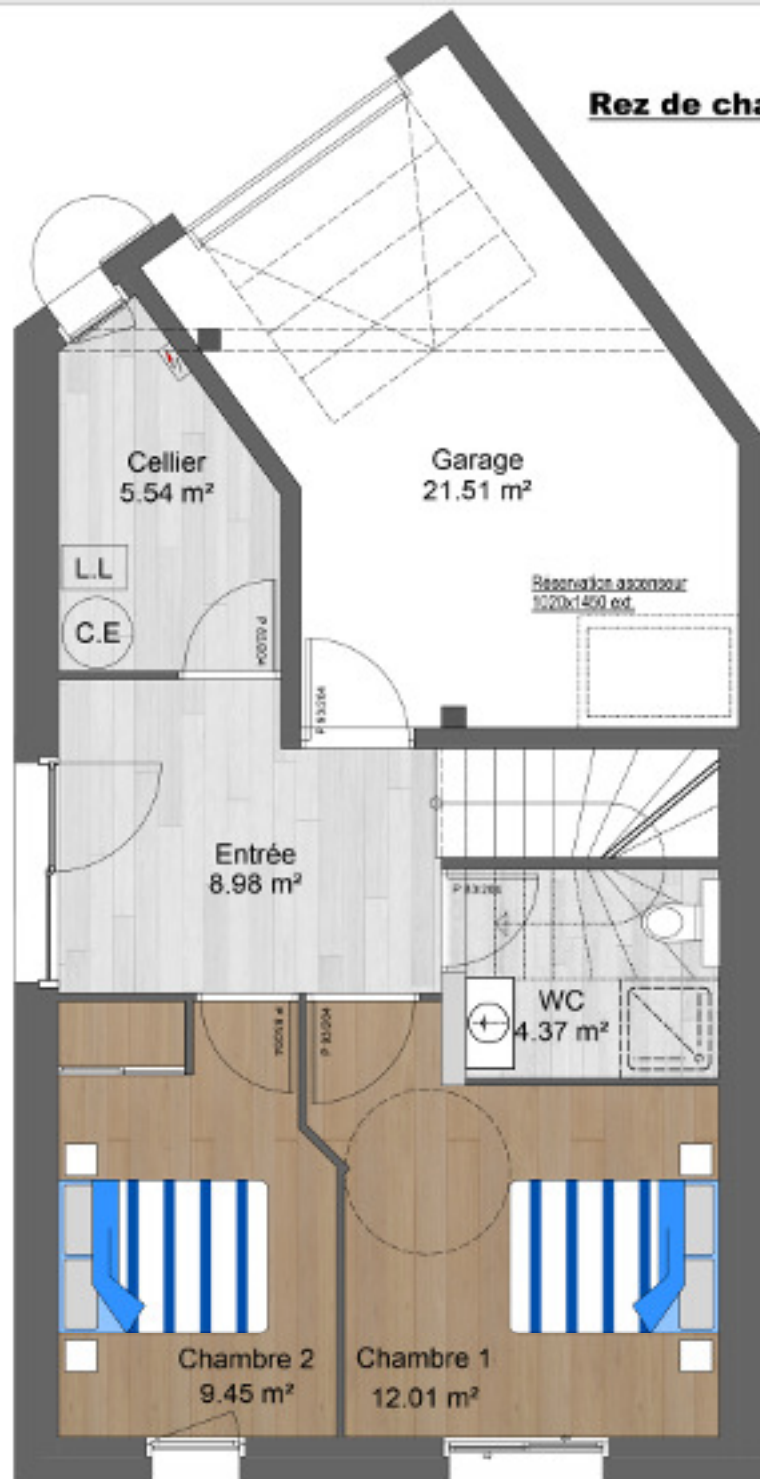


Rez de chaussée



SURFACES HABITABLES	
Entrée	8.98
Cuisine Séjour	36.03
Chambre 1	12.01
Chambre 2	9.45
Chambre 3	10.34
Cellier	5.54
SdB	4.80
WC	4.37
WC 2	1.42
TOTAL S. Habitable	92.94
GARAGE	21.51

Etage

